

# One of 17 Strategic Innovation Programs

Strategiska  
Innovations-  
program



Gruv- och Metallutvinning



Lättvikt



Metalliska Material



Produktion2030



Processindustriell IT &  
Automation



Innovair



BioInnovation



Grafen



Internet of Things



Smartare  
Elektroniksystem



SweLife



Automatiserade  
Transporter



INFRA Sweden 2030



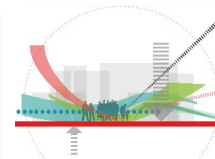
MedTech4Health



Re:Source



Smart Built Environment



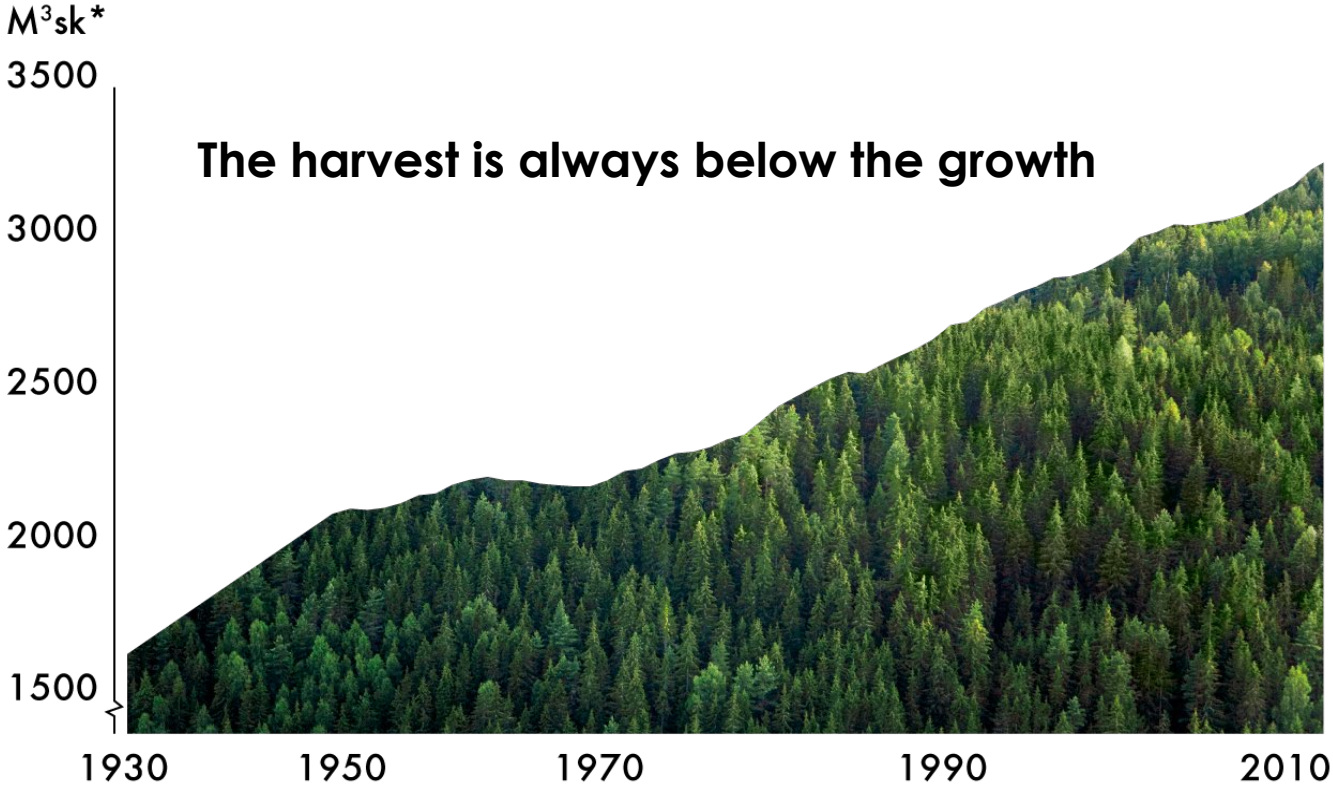
Viable Cities

With support from:

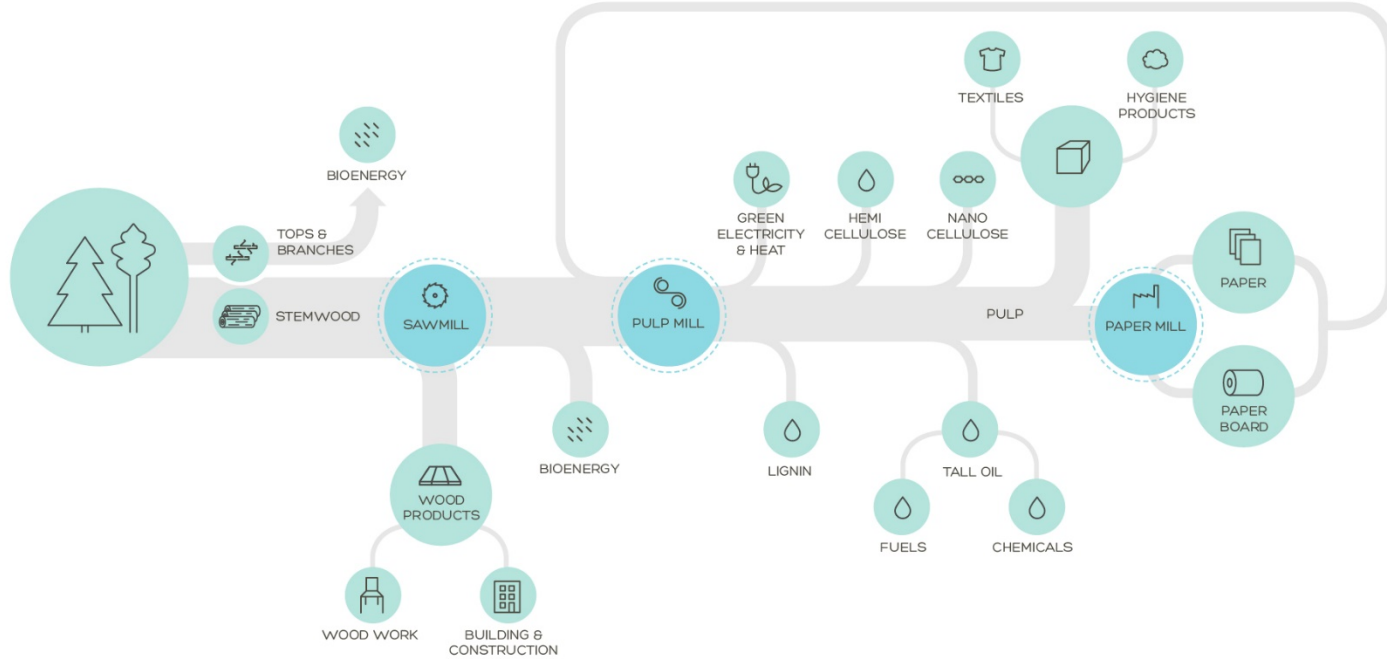




# Wood biomass has doubled



# The whole tree is being used



Principal sketch



# Building in wood



Vallastaden, Linköping  
Treet, Norge  
Photos: David Valdeby/Svenskt Trä

# Paper





# Packaging

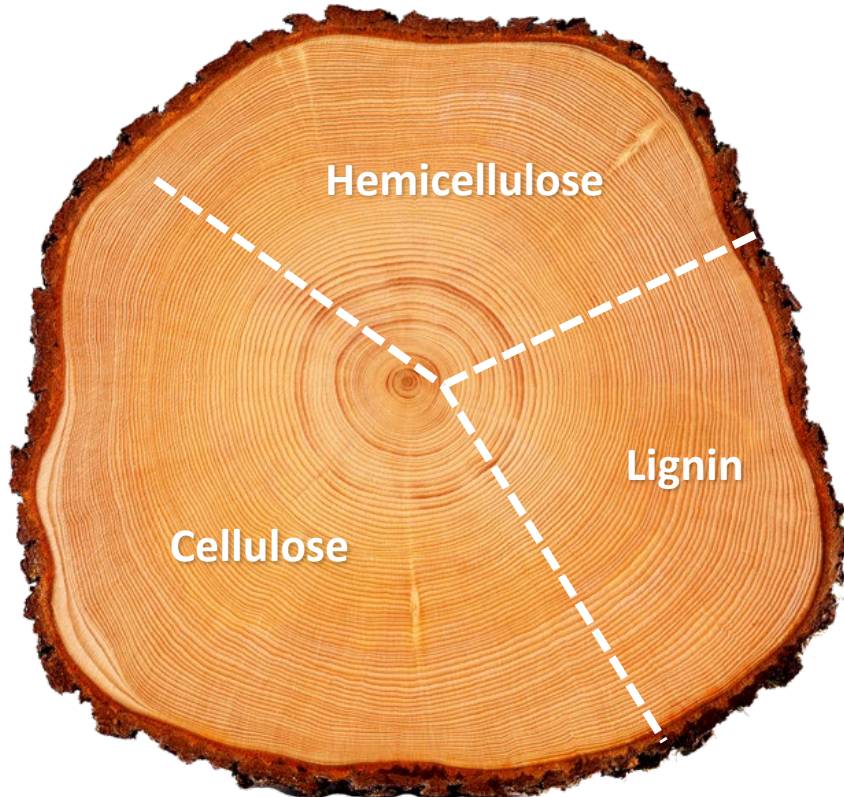


**How about the future?**





# "The toolkit"



Lignin



# From black liquor to transport fuels



*Photo by Johan Olsson*



# Acceleration by collaboration

A photograph of two women in a laboratory. The woman on the left is looking at a small glass vial held by the woman on the right. The vial contains a yellow liquid. The background is a blurred laboratory environment.

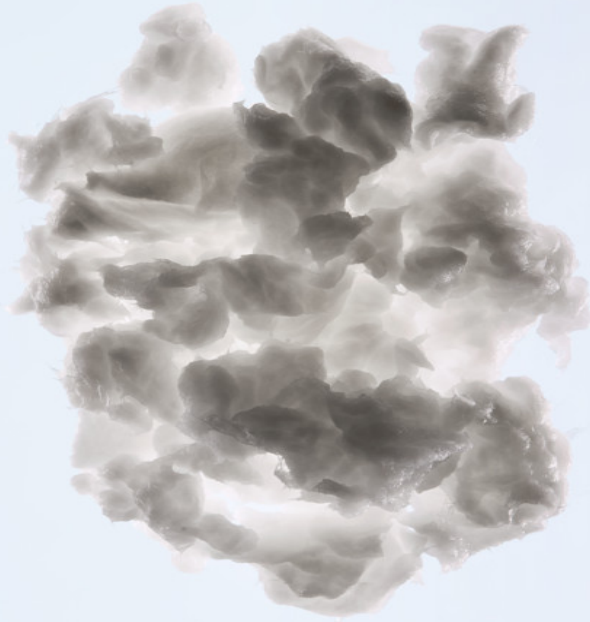
*Åsa Håkansson , Preem  
Katarina Ohlsson, RISE  
Photo by Johan Olsson*



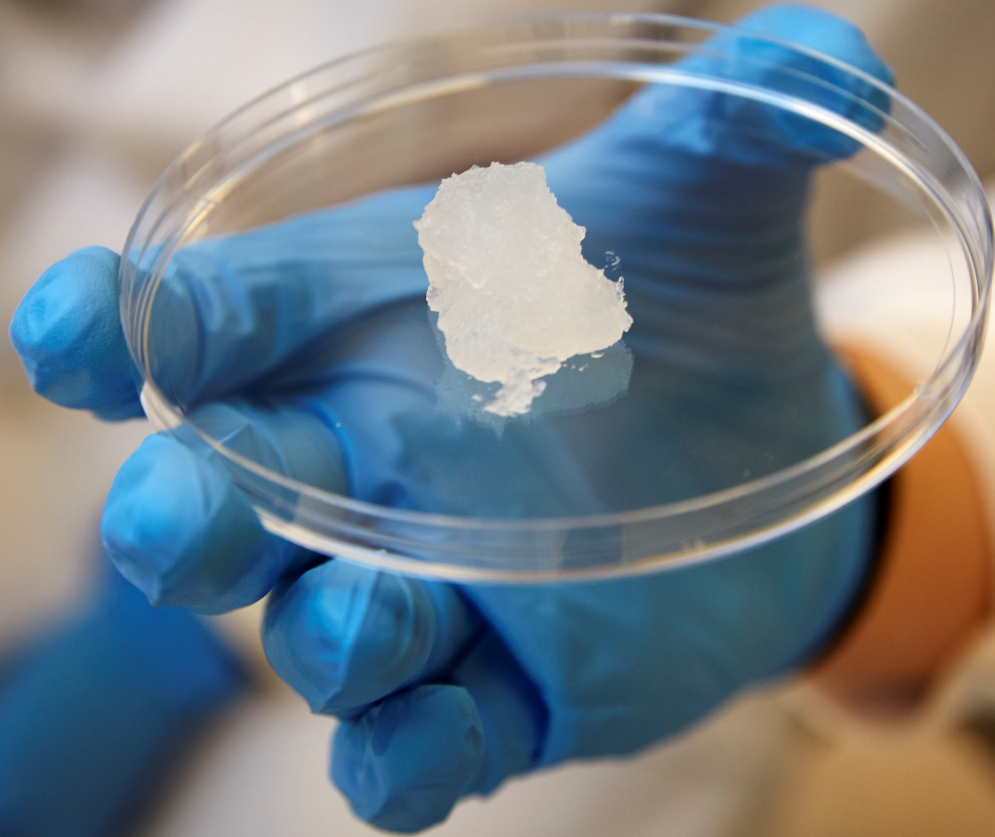
# Carbon fibre



# Cellulose



# Nanocellulose



*Photo by Johan Olsson*

# OnSkin – An innovative concept for wound healing





production  
sustainability  
sustainable  
recycling  
replace  
design  
reuse  
recycle  
products  
redesign  
process  
material

# Textiles made from paper



*Bild från Högskolan Borås*



[forestindustries.se/events](https://forestindustries.se/events)



[www.bioinnovation.se](http://www.bioinnovation.se)  @bioinnovation1